

# Jet Hybrid200

200W Hybrid Moving head, with 3.5° - 40° zoom and color wheel

ORDER CODE: JETHYB200



**Jet Hyb200** is a budget-friendly, hybrid beam-spot moving light, offering high-quality and powerful output in a compact design. Tailored for both mid-air effects and image projections, it boasts an impressive 8,000-lumen output from a 200W LED source. Its fast zoom ranges from 3.5° to 40°, making it an excellent replacement to compact discharge hybrid fixtures.

The **Jet Hyb200's** dynamic effects suite includes a color wheel with 13 dichroic filters, two gobo wheels featuring 8 rotating and 17 static gobos, along with prism and frost capabilities for diverse creative needs.

## MAIN FEATURES

- Beam-Spot hybrid moving light with 200W LED source
- Linear zoom ranging from 3.5° to 40°
- 15 kg

## TECHNICAL SPECIFICATION

### LIGHT SOURCE

- Source: 200 W high-power white LED
- CCT: 7.000
- Luminous flux: (3,5°) 5'962 lm - (40°) 7'593 lm
- Lux: (3,5°) 69'503 lx - (40°) 1'461 lx @5 m full
- CRI: > 70 (CCT 6000K and CRI > 84 with filter on color wheel)
- Source life expectancy: > 30.000 h

### OPTICS

- Zoom: 3,5° - 40 ° motorised linear zoom
- Lens diameter: 100 mm
- Lens type: HD anti-reflection lenses with achromatic coating
- Focus: motorised

### COLOUR SYSTEM

- CCT: on wheel 3.200 K
- Colour wheel: 11 colour filters
- Colour wheel: High CRI colour filters
- DYNAMIC EFFECTS
- Control Resolution: 16-bit dimmer
- Rotating gobos: 8 rotating gobos + open, interchangeable, indexing
- Gobo size: outer: 13,9 mm - image: 11 mm - thickness: up to 3 mm
- Fixed gobos: 17 fixed gobos + open
- Circular prism: 5 f with bi-directional rotation, indexing
- Frost: linear 0 - 100% light frost filter, interchangeable

### BODY

- Hardware on-board: sockets for quick-Lock Omega bracket (clamp not included)
- Pan angle: 540 °
- Tilt angle: 260 °
- Pan/Tilt resolution: bit 8 / 16-bit
- Feedback: automatic repositioning after accidental movement
- Body: aluminium structure with high-resistance polycarbonate cover
- Body colour: RAL 9004

## ACCESSORIES & RELATED PRODUCTS

- |              |  |
|--------------|--|
| • FCLJETH200 | Flight case for 4 pcs of JETHYB200                                   |
| • JH200HF    | Optional accessory heavy frost filter for JETHYB200                  |
| • OS24PLUS   | Quick-lock omega bracket, M12 hole                                   |
| • C6002B     | Slim aluminum clamp, 200kg loading, 48-51mm tubes, M10 bolt, Black   |
| • C6016B     | Selflock slim clamp, 250Kg load, 48-51mm tubes, M10 bolt incl, Black |
| • RSR1235B   | Steel security cable for hanging bodies, inox steel shackle          |

### CONTROL

- Protocols: DMX512, RDM
- DMX channels: 20 channel
- RDM: RDM for remote monitoring and settings
- Display: LCD high resolution colour display with autoflip
- Firmware upgrade: yes, via USB - DMX interface (UPBOXPRO/UPBOX2) not included or via USB pen drive

### ELECTRONICS

- Dimmer: linear 0 ~ 100% electronic dimmer
- Dimmer curves: 4 selectable dimming modes available
- Strobe / shutter: 1 - 30 Hz, electronic
- Display battery: self-charging battery backup
- Operating temperature: -10° ~ +45°
- LED Control: flicker free frequency with adjustable PWM
- Selectable PWM: 600 ~ 50.000 Hz

### ELECTRICAL

- Mains power supply: 100-240V - 50/60Hz (max absolute range: 90-264V - 50/60Hz)
- Max power consumption: 276 W
- Output (at 230V): 8 units on a single power line
- Power factor: > 0,94

### PHYSICAL

- IP rating: 20
- Cooling: combination of heat pipe cooling system and low noise fan
- Suspension and fixing: any position with quick-lock omega brackets
- Pan / tilt lock: for transportation and maintenance
- Signal connection: Neutrik IP XLR 5p IN/OUT connectors
- Power connection: Neutrik powerCON TRUE1 IN/OUT connectors
- Dimensions (WxHxD): 356x538x205 mm
- Weight: 15 kg

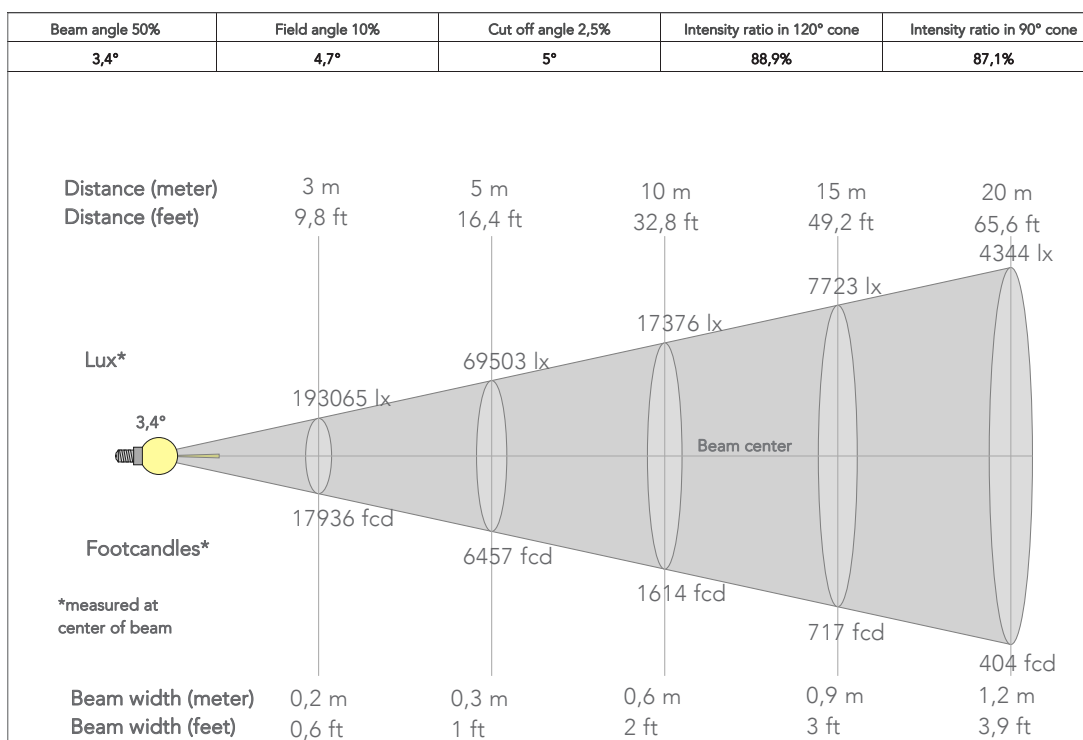
### CERTIFICATIONS / APPROVALS

- Certifications / Approvals: CE, RCM, FCC, cTUVus

- |                |  |
|----------------|--|
| • 9533FXWL03   | Ass. 3x2.5mm TH07 cable, SHUKO plug, MENAC3FXW socket, L.3m            |
| • 9513FXWL03   | Ass. 3x2.5mm TH07 cable, 16A 3p 230V CEE plug, MENAC3FXW socket, L.3 m |
| • 958225L03    | 3x2.5mm TH07 Cable, 16A 3p PwCon MXW, 16A 3p PwCon FXW, L. 3m          |
| • TOUR53415L03 | Dmx cable HC5340. CANC5MXX XLR 5p->CANC5FXX XLR (f) 5p, L.3m           |
| • UPBOXPRO     | Firmware uploader kit, USB IN, 5-pin XLR DMX OUT connector             |

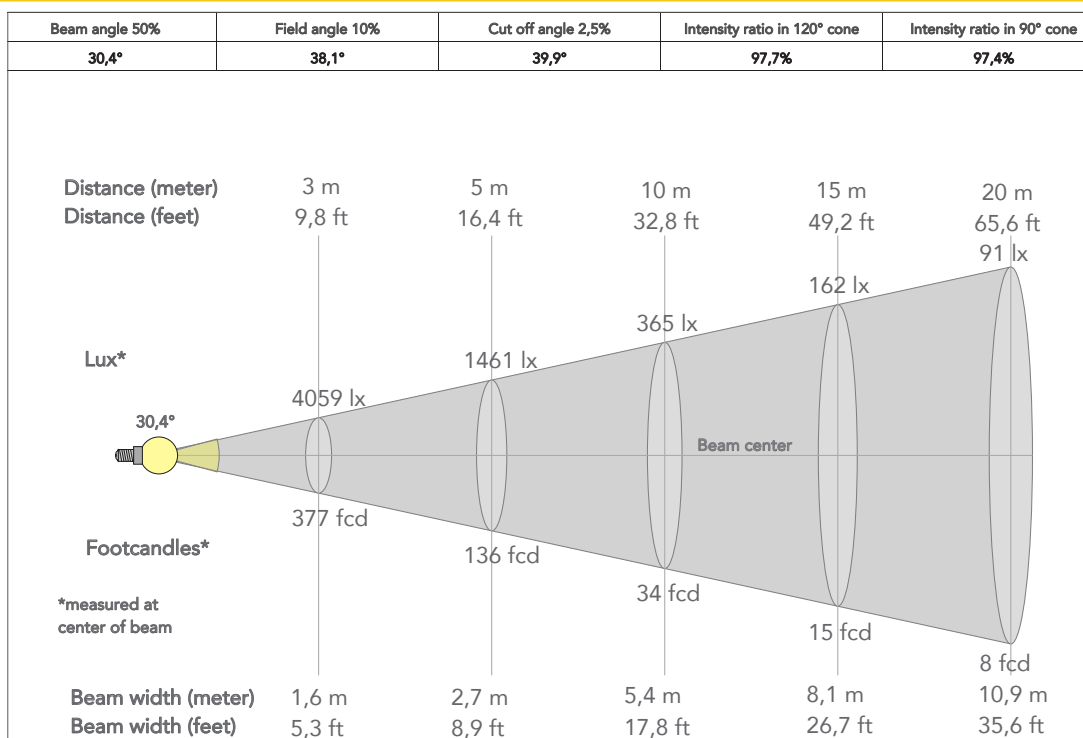
## PRESET FULL ON

Beam angle 50%: 3.4°

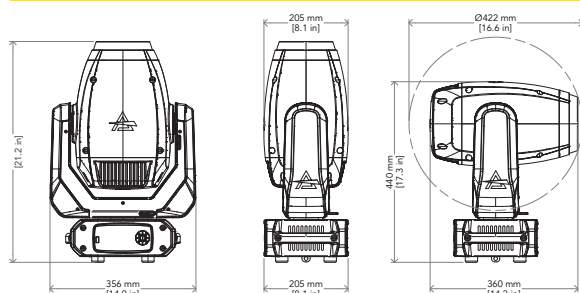


## PRESET FULL ON

Beam angle 50%:



## TECHICAL DRAWINGS



## CERTIFICATIONS / APPROVALS



Conforms to UL STD. 1573  
Certified to CSA STD: C22.2 NO. 166

Visit our website  
for specifications and  
tech documentations

