

# EclFresnel

LED Fresnel with HB white source, to replace 1.000W lamp



**EclFresnel** is the LED replacement for a standard tungsten 1.000W Fresnel. Featuring the output characteristics of a traditional Fresnel but with beam control, functional barn doors and a powerful source that focuses on outstanding colour rendition. The **EclFresnel** adds all the advantages of LED to the Fresnel.

## MAIN FEATURES

- TU (3.200 K) and DY (5.600 K) versions available both with HD dimming
- Fresnel lens with 17° to 42° zoom range
- Silent operation for studio and stage use

## VERSIONS

Code	CCT	Pole Operated	Housing
<b>ECLFRESNELTU</b>	3.200 K	NO	Black
<b>ECLFRESNELDY</b>	5.600 K	NO	Black
<b>ECLFRESNELPTU</b>	3.200 K	YES	Black
<b>ECLFRESNELPDY</b>	5.600 K	YES	Black
<b>ECLFRESNELTUWH</b>	3.200 K	NO	White
<b>ECLFRESNELDYWH</b>	5.600 K	NO	White

## TECHNICAL SPECIFICATION

### LIGHT SOURCE

- Source: 230W high-power white LED
- CCT: (TU) 3.200 K - (DY) 5.600K
- Luminous flux: (TU) (17°) 10'842 lm (42°) 13'320 lm @full
- Luminous flux: (DY) (17°) 12'546 lm (42°) 15'623 lm @full
- Lux: (TU) (17°) 3'728 lx - (42°) 1'019 lx @5 m full
- Lux: (DY) (17°) 4'260 lx - (42°) 1'182 lx @5 m full
- CRI: (TU) >98 - (DY) >95
- R9: (TU) >90 - (DY) >90
- TLCI: (TU) >98; (DY) >95
- TM30 Rf: (TU) >92; (DY) >89
- TM30 Rg: (TU) >99; (DY) >98
- Source life expectancy: > 50.000 h

### OPTICS

- Zoom: 17° - 42° half peak angle
- Lens diameter: 8" - 200 mm
- Lens type: fresnel zoom lens
- Other: barndoor and gel frame included

### COLOUR SYSTEM

- Colour mixing: white

### DYNAMIC EFFECTS

- Static colour mode: selection of static dimmer
- Manual colour mode: manual adjust of dimmer through menu and knob
- Auto mode: built-in programs with execution speed adjustment

### BODY

- Hardware on-board: included filter frame, 8 doors barndoor, spigot
- Pan angle: (for pole operated version) 360° with manual regulation
- Tilt angle: (for pole operated version) 340° with manual regulation
- Body: sturdy die-cast aluminium body
- Body colour: black, white finishing available
- Other: Spigot 28 mm

### CONTROL

- Protocols: DMX512, RDM, rotary knob
- DMX channels: ch1: 1 / 2 - ch2: 2 / 3 / 5 channel
- RDM: RDM ready for remote monitoring and settings
- Display: Graphic User Interface
- Firmware upgrade: yes, via USB - DMX interface (UPBOX1) not included
- Master/Slave: for synchronised operation of more units linked in a chain
- Other: 16bit control of dimmer

### ELECTRONICS

- Dimmer: linear 0 ~ 100%, manual knob dimmer
- Dimmer curves: selectable dimming modes available
- Strobe / shutter: 1 - 30 Hz, electronic
- Operating temperature: -10° ~ +45°
- LED Control: flicker free frequency with adjustable PWM
- Selectable PWM: 600 ~ 25.000 Hz

### ELECTRICAL

- Mains power supply: 100-240V - 50/60Hz
- Max power consumption: 210W
- Output (at 230V): 10 units on a single power line
- Power factor: 0,95

### PHYSICAL

- Cooling: combination of heat pipe cooling system and low noise fan
- Suspension and fixing: bracket for hanging and positioning
- Signal connection: Amphenol XLR 5p IN/OUT connectors
- Power connection: Neutrik powerCON TRUE1 IN/OUT connectors
- IP rating: 20
- Dimensions (WxHxD): 283x440x343 mm
- Weight: 7,5 kg - (for pole operated version) 9,7 kg

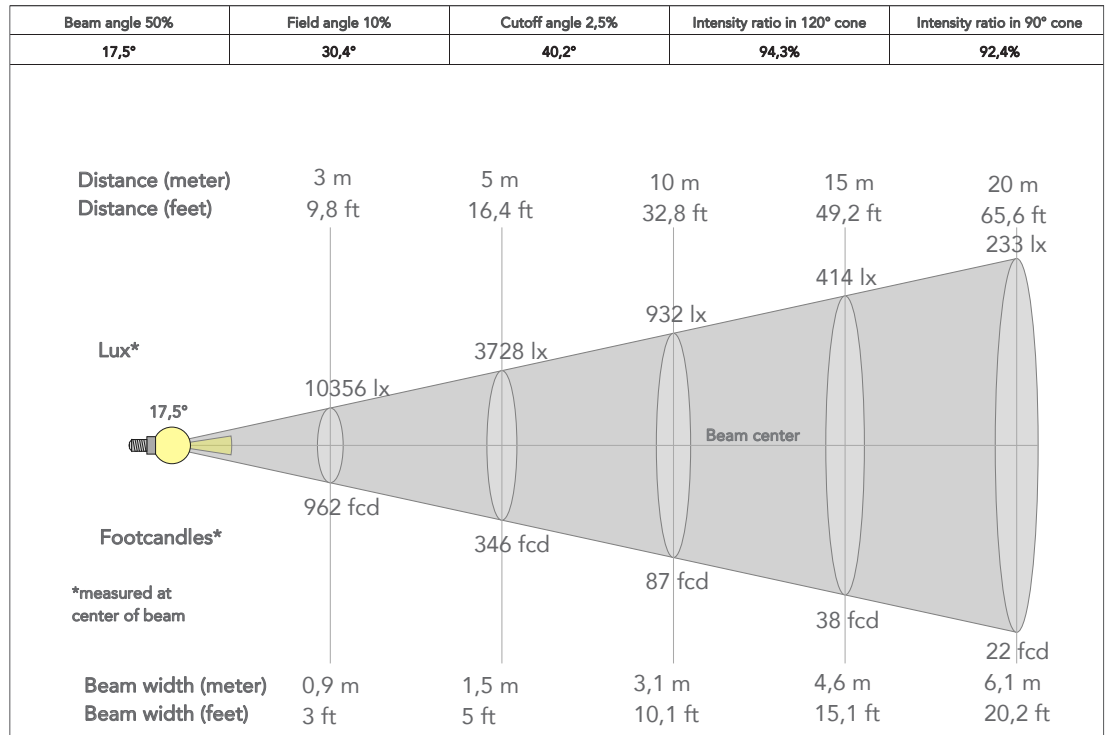
## ACCESSORIES & RELATED PRODUCTS

- ECLFRSPG Spigot for PROLIGHTS Fresnel series (included)
- ECLFRSBD Barn door with directional flaps to adjust the light beam (included)
- FCLECLFRS Flight case for 4x ECLFRESNEL
- ECLFRSTPG Filter frame for ECLFRESNEL series (included)

- ECLFRSNL Narrow angle lens for ECLFRESNEL TU and DY fresnel projectors
- C6040B Heavy-load aluminum clamp, 500kg loa, 48-51mm tubes, M10 bolt inc., Black
- UPBOX1U Firmware uploader kit, USB IN, 3pin XLR DMX OUT, USB OUT

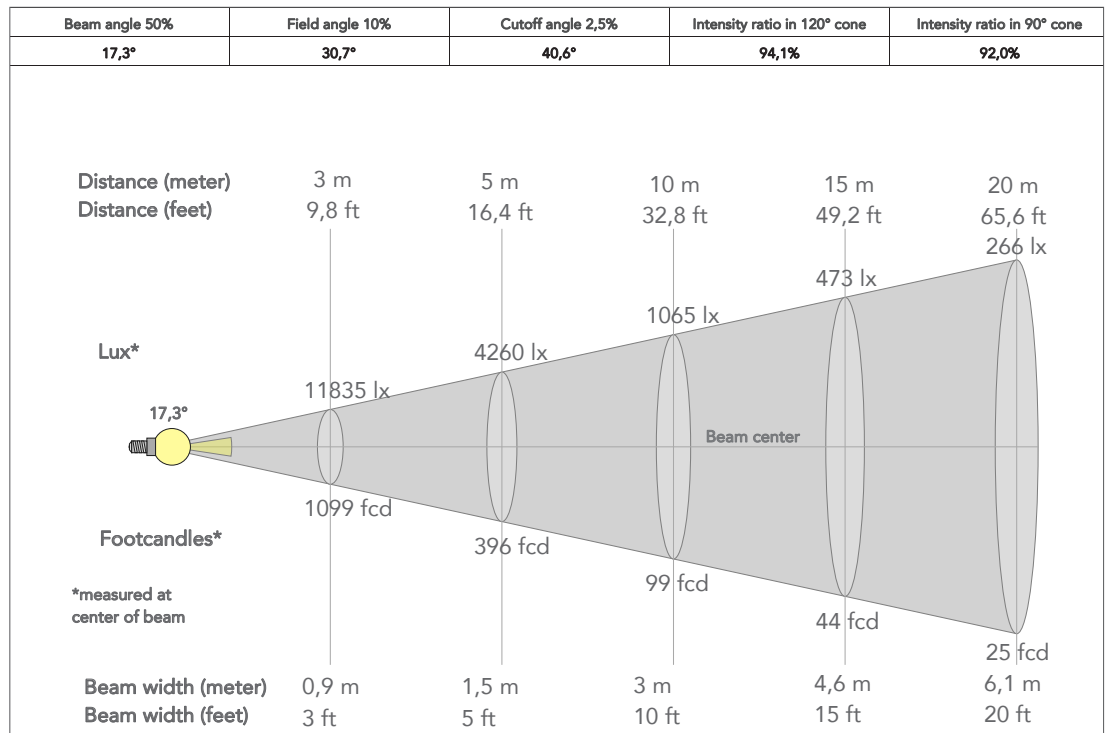
**(TU) PRESET FULL ON**

Beam angle 50%: 17°

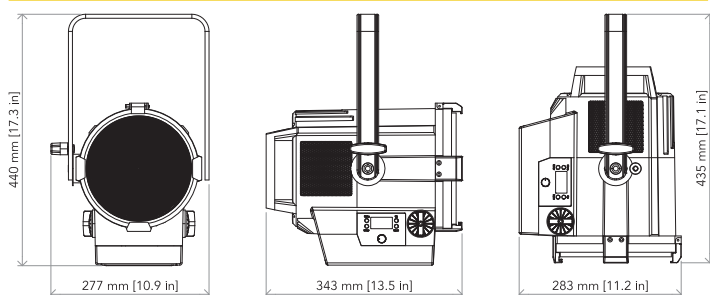


**(DY) PRESET FULL ON**

Beam angle 50%: 17°



**TECHICAL DRAWINGS**



For more product info and downloads visit our website

